

# KOI FEED '17/'18

DEDICATED TO YOUR PERFORMANCE



Sinking feed



Floating feed



Prebiotic and/or Probiotic



Omega-3 fatty acids



Contains **Actigen**<sup>®</sup>



Strengthens the colour of the fish



Including Montmorillonit (CLAY)



# NEW PREMIX AND ADDITIVES

- Improved premix in all Coppens feeds:
  - BIO-MOS®
  - BIOPLEX®
  - Actigen®
- DHA enrichment through marine algae (FORPLUS™)

## INCLUDED IN OUR NEW PREMIX

## NEW FEED ADDITIVE

### BIO-MOS®

is a mannan-oligosaccharide that is known to bind and drain opportunistic bacteria. This can result in a significant improvement of the intestinal flora. Additionally, it can improve the structure and length of the microvilli in the gut through which the nutrient intake can increase. **BIO-MOS®** contributes to mucous barrier protection.

IMPROVED  
INTESTINAL  
FUNCTION



### BIOPLEX®

is a crucial element in our new premix. **BIOPLEX®** are organically bound trace elements such as zinc, copper, manganese and iron. With **BIOPLEX®** we can improve the health, growth and performance of the fish.

IMPROVED  
PERFORMANCE



### Actigen®

is derived from yeast cell walls and supports the fish's immune response. **Actigen®** furthermore optimizes growth in fish.

IMMUNE  
SYSTEM  
SUPPORT



### FORPLUS™

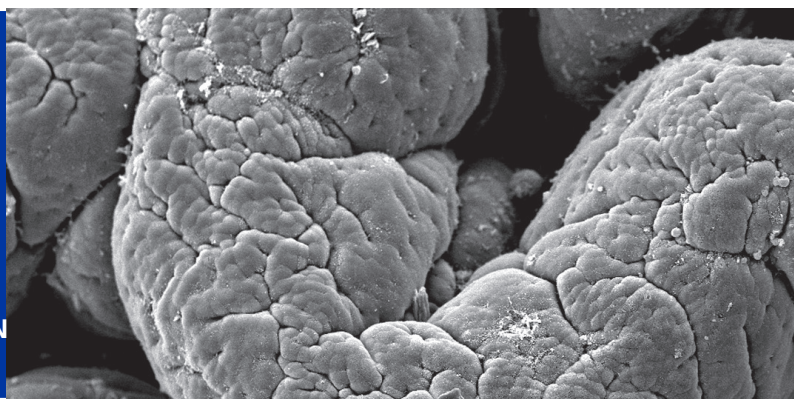
is a Fish Oil Replacer which contains a high amount of Omega -3 fatty acids and especially DHA. With **FORPLUS™** we can replace fish oil in our feeds. This product is produced from marine algae and is free from contaminants.

OMEGA-3  
AND DHA

Ω-3

## BENEFITS

- + OPTIMIZES GROWTH
- + SUPPORTS IMMUNE RESPONSE
- + OPTIMIZES DIGESTIVE FUNCTION
- + CONTRIBUTES TO MUCOUS BARRIER PROTECTION
- + CONTRIBUTES TO EXTERNAL BARRIER PROTECTION



- Low energy level for perfect body shape
- Contains spirulina
- Good all year round
- With FOR<sup>PLUS</sup><sup>™</sup> (omega-3 rich algae)

## COMPOSITION:

Analyses (%)		Size:
Protein	34%	3.0 mm
Fat	5%	6.0 mm
Crude fibre	3,8%	
Ash	6,8%	
Vitamins added		
Vitamin A (IE/kg)	9.999	
Vitamin D (IE/kg)	3.042	
Vitamin E (mg/kg)	200	
Vitamin C (stable) (mg/kg)	250	

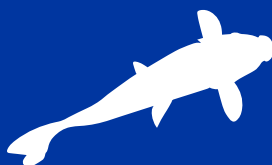
The values of the nutrients and vitamins are from the time of writing. These values can vary due to natural variation in the ingredients. We reserve the right to change our recipes. For the exact values we refer to the label.

## PERFECT FOR FEEDING ALL KOI:

### APPLICATION:

Our Staple is a complete floating diet for koi. Highly digestible ingredients make Staple a perfect diet for daily use. The nutritional balance keeps your koi in a good condition.

Because it is a water stable floating feed, you can observe your fish's eating behaviour easily and water pollution is minimized.



\* Feed 2-4 times per day depending on fish size and water temperature and no more than the koi eat within 5 minutes. Remove uneaten feed from the pond in case of overfeeding. At water temperatures below 10 °C koi have a reduced appetite and slow digestion, therefore feed accordingly. Don't feed koi if the water temperature is below 5 °C.

- High protein level for growth
- Highly palatable
- Rich in essential amino acids
- Correct protein and energy level to retain good shape
- With **FORPLUS™** (omega-3 rich algae)

## COMPOSITION:

Analyses (%)		Size:
Protein	44%	3.0 mm
Fat	11%	6.0 mm
Crude fibre	3,1%	
Ash	6,2%	

Vitamins added	
Vitamin A (IE/kg)	10.000
Vitamin D (IE/kg)	2.551
Vitamin E (mg/kg)	200
Vitamin C (stable) (mg/kg)	250

The values of the nutrients and vitamins are from the time of writing. These values can vary due to natural variation in the ingredients. We reserve the right to change our recipes. For the exact values we refer to the label.

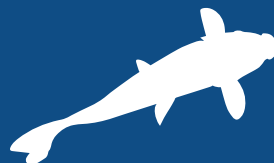
## PERFECT FOR FEEDING ALL KOI:



## APPLICATION:

Grower is a complete floating grower feed with a higher protein level to promote growth. The right protein / energy (P/E) ratio not only gives a good growth and muscle development but also helps to keep the right shape.

You can use Grower to grow show koi to large sizes.



\* Feed 2-4 times per day depending on fish size and water temperature and no more than the koi eat within 5 minutes. Remove uneaten feed from the pond in case of overfeeding. At water temperatures below 10 °C koi have a reduced appetite and slow digestion, therefore feed accordingly. Don't feed koi if the water temperature is below 5 °C.

- Ideal in cooler water due to a high wheat germ level
- Highly digestible
- Includes a prebiotic fibre, inulin and organic acids
- Supports a high vitality
- With **BIO-MOS**<sup>®</sup> (mannan-oligosaccharide)
- With **FORPLUS**<sup>™</sup> (omega-3 rich algae)

## COMPOSITION:

Analyses (%)		Size:
Protein	37%	3.0 mm
Fat	7%	6.0 mm
Crude fibre	2,4%	
Ash	8,1%	

Vitamins added	
Vitamin A (IE/kg)	24.978
Vitamin D (IE/kg)	2.356
Vitamin E (mg/kg)	200
Vitamin C (stable) (mg/kg)	330

The values of the nutrients and vitamins are from the time of writing. These values can vary due to natural variation in the ingredients. We reserve the right to change our recipes. For the exact values we refer to the label.

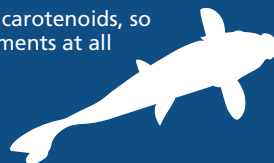
## PERFECT FOR FEEDING ALL KOI:

### APPLICATION:

Wheatgerm is a premium condition feed to keep your koi in a good condition throughout the year. Thanks to the high level of wheat germ, this diet is rich in vitamin E, essential fatty acids and minerals and is highly digestible.

Especially when the water temperatures drop (below 15 °C), many koi keepers choose Wheatgerm as this diet performs well also under these conditions.

Furthermore, Wheatgerm does not contain any carotenoids, so it's ideal for koi that should not receive any pigments at all for an optimal contrasting coloration.



\* Feed 2-4 times per day depending on fish size and water temperature and no more than the koi eat within 5 minutes. Remove uneaten feed from the pond in case of overfeeding. At water temperatures below 10 °C koi have a reduced appetite and slow digestion, therefore feed accordingly. Don't feed koi if the water temperature is below 5 °C.

- Supports a good health status
- Contains a prebiotic fibre, inulin and includes garlic
- With organic acids
- With **Actigen**<sup>®</sup> to support the immune system
- With **BIO-MOS**<sup>®</sup> (mannan-oligosaccharide)
- With **FORPLUS**<sup>™</sup> (omega-3 rich algae)

## COMPOSITION:

Analyses (%)		Size:
Protein	26%	6.0 mm
Fat	6%	
Crude fibre	3,5%	
Ash	7,1%	
Vitamins added		
Vitamin A (IE/kg)	25.080	
Vitamin D (IE/kg)	2.610	
Vitamin E (mg/kg)	411	
Vitamin C (stable) (mg/kg)	1.017	

The values of the nutrients and vitamins are from the time of writing. These values can vary due to natural variation in the ingredients. We reserve the right to change our recipes. For the exact values we refer to the label.

## PERFECT FOR FEEDING ALL KOI:

### APPLICATION:

Health is a high quality, health supporting feed for koi, based on highly digestible and palatable ingredients like Wheatgerm. The ingredient garlic contains allicin, which has a natural anti-microbial activity which may further contribute to a good health status of koi. In the meantime, the inulin serves as a food source for the positive micro flora in the gut and the added organic acids may improve the digestion and form a barrier for pathogenic bacteria.

Koi can benefit from our Health diet in times of stress, adverse conditions and when a boost of the condition is needed. Because Health is pigment free and low in energy it can be used after periods of intensive carotenoid feeding as a preparation for contests with show koi to reach optimal coloration. White turns into pure white again.



\* Feed 2-4 times per day depending on fish size and water temperature and no more than the koi eat within 5 minutes. Remove uneaten feed from the pond in case of overfeeding. At water temperatures below 10 °C koi have a reduced appetite and slow digestion, therefore feed accordingly. Don't feed koi if the water temperature is below 5 °C.



- High protein level
- Contains paprika and astaxanthin
- Includes a prebiotic fibre, inulin
- With organic acids and krill
- With **BIO-MOS**<sup>®</sup> (mannan-oligosaccharide)
- With **FORPLUS**<sup>™</sup> (omega-3 rich algae)

## COMPOSITION:

Analyses (%)		Size:
Protein	45%	1.5 mm
Fat	7%	3.0 mm
Crude fibre	2,8%	6.0 mm
Ash	8,4%	
Astaxanthin (mg/kg)	10	

Vitamins added	
Vitamin A (IE/kg)	25.966
Vitamin D (IE/kg)	2.533
Vitamin E (mg/kg)	405
Vitamin C (stable) (mg/kg)	485

The values of the nutrients and vitamins are from the time of writing. These values can vary due to natural variation in the ingredients. We reserve the right to change our recipes. For the exact values we refer to the label.

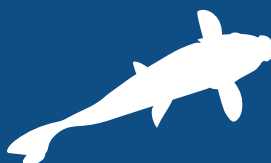
## PERFECT FOR FEEDING ALL KOI:



## APPLICATION:

Our Orange is a premium grower for koi with carotenoids for colour intensification. This diet contains krill meal to make it extra attractive for koi and stimulates a good feed intake.

It also contains inulin and **BIO-MOS**<sup>®</sup>. Inulin serves as a food source for the positive micro flora in the gut. **BIO-MOS**<sup>®</sup> binds opportunistic bacteria and optimizes digestive function. This supports a good intestinal balance.



\* Feed 2-4 times per day depending on fish size and water temperature and no more than the koi eat within 5 minutes. Remove uneaten feed from the pond in case of overfeeding. At water temperatures below 10 °C koi have a reduced appetite and slow digestion, therefore feed accordingly. Don't feed koi if the water temperature is below 5 °C.

- Contains spirulina and is high in astaxanthin
- With organic acids
- Includes a prebiotic fibre, inulin and a probiotic
- With **BIO-MOS**<sup>®</sup> (mannan-oligosaccharide)
- With **FORPLUS**<sup>™</sup> (omega-3 rich algae)

## COMPOSITION:

Analyses (%)		Size:
Protein	37%	3.0 mm
Fat	7%	6.0 mm
Crude fibre	2,1%	
Ash	8,5%	
Astaxanthin (mg/kg)	70	

Vitamins added	
Vitamin A (IE/kg)	24.992
Vitamin D (IE/kg)	2.348
Vitamin E (mg/kg)	200
Vitamin C (stable) (mg/kg)	330

The values of the nutrients and vitamins are from the time of writing. These values can vary due to natural variation in the ingredients. We reserve the right to change our recipes. For the exact values we refer to the label.

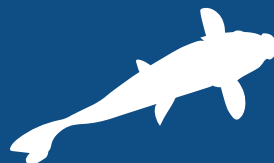
## PERFECT FOR FEEDING ALL KOI:



## APPLICATION:

For deep and especially intense red colours in koi, you can use our Spirulina diet. This carotenoid rich feed can be used in preparation for shows and contests. Because the white parts may discolor slightly, it is advised to switch to Health or Wheatgerm in the last month to make the white pure white again.

As well as carotenoids, this feed also contains essential amino acids, **FORPLUS**<sup>™</sup> (omega-3 rich algae) and inulin. Also, Spirulina is highly digestible which helps to maintain a good water quality.



\* Feed 2-4 times per day depending on fish size and water temperature and no more than the koi eat within 5 minutes. Remove uneaten feed from the pond in case of overfeeding. At water temperatures below 10 °C koi have a reduced appetite and slow digestion, therefore feed accordingly. Don't feed koi if the water temperature is below 5 °C.





- High protein level and low pollution
- Contains astaxanthin and spirulina
- Includes a prebiotic fibre, inulin and a probiotic
- With organic acids and wheat germ
- With **BIO-MOS**<sup>®</sup> (mannan-oligosaccharide)
- With **FORPLUS**<sup>™</sup> (omega-3 rich algae)

## COMPOSITION:

Analyses (%)		Size:
Protein	49%	3.0 mm
Fat	8%	6.0 mm
Crude fibre	1,3%	
Ash	8,7%	
Astaxanthin (mg/kg)	20	

Vitamins added	
Vitamin A (IE/kg)	27.892
Vitamin D (IE/kg)	2.080
Vitamin E (mg/kg)	251
Vitamin C (stable) (mg/kg)	486

The values of the nutrients and vitamins are from the time of writing. These values can vary due to natural variation in the ingredients. We reserve the right to change our recipes. For the exact values we refer to the label.

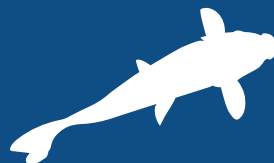
## PERFECT FOR FEEDING ALL KOI:

### APPLICATION:

Top Koi is our number 1 professional feed for koi. The protein/ fat ratio is balanced to maximize the growth of your koi and simultaneously keep them in a perfect shape.

We included **FORPLUS**<sup>™</sup> an omega-3 rich algae and **BIO-MOS**<sup>®</sup> in order to keep your koi in excellent health and top condition. This is especially important for show koi that can become very old. Also we added wheat germ for a boost of Vitamin E. Furthermore, it contains astaxanthin and spirulina to support the colours in your koi.

Top Koi is also fortified with a probiotic.



\* Feed 2-4 times per day depending on fish size and water temperature and no more than the koi eat within 5 minutes. Remove uneaten feed from the pond in case of overfeeding. At water temperatures below 10 °C koi have a reduced appetite and slow digestion, therefore feed accordingly. Don't feed koi if the water temperature is below 5 °C.

- Contains astaxanthin, paprika and spirulina
- Includes a prebiotic fibre, inulin and a probiotic
- With wheat germ
- Contains organic acids
- With **BIO-MOS**<sup>®</sup> (mannan-oligosaccharide)
- With **FORPLUS**<sup>™</sup> (omega-3 rich algae)

## COMPOSITION:

Analyses (%)		Size:
Protein	40%	3.0 mm
Fat	7%	6.0 mm
Crude fibre	2,4%	
Ash	8,3%	
Astaxanthin (mg/kg)	27	

Vitamins added	
Vitamin A (IE/kg)	25.300
Vitamin D (IE/kg)	2.412
Vitamin E (mg/kg)	270
Vitamin C (stable) (mg/kg)	380

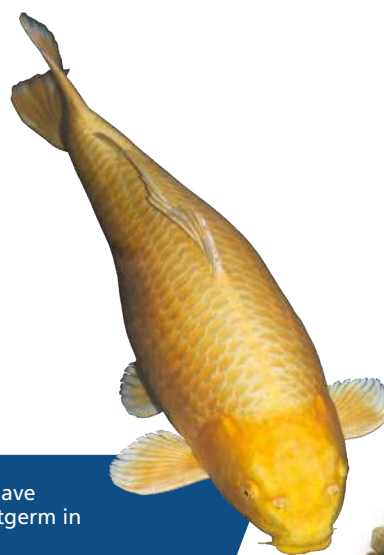
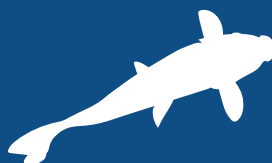
The values of the nutrients and vitamins are from the time of writing. These values can vary due to natural variation in the ingredients. We reserve the right to change our recipes. For the exact values we refer to the label.

## PERFECT FOR FEEDING ALL KOI:

### APPLICATION:

Koi Mix OSW is a luxurious mix of three premium koi feeds. We have united all the good elements of our Orange, Spirulina and Wheatgerm in one mix.

Thanks to this combination, Koi Mix OSW is rich in essential Omega-3 fatty acids, rich in carotenoids, rich in Vitamin E and contains a natural prebiotic and organic acids.



\* Feed 2-4 times per day depending on fish size and water temperature and no more than the koi eat within 5 minutes. Remove uneaten feed from the pond in case of overfeeding. At water temperatures below 10 °C koi have a reduced appetite and slow digestion, therefore feed accordingly. Don't feed koi if the water temperature is below 5 °C.